

Algebra

11/17

Graph the functions defined by the following rules:

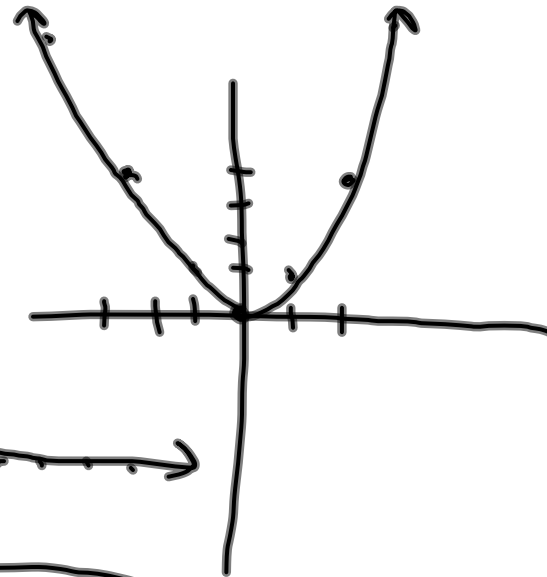
a.) $f(x) = 3x$

b.) $f(x) = x^2$

c.) $f(x) = 4$

x	y
-2	-4
-1	-1
0	0
1	1
2	4

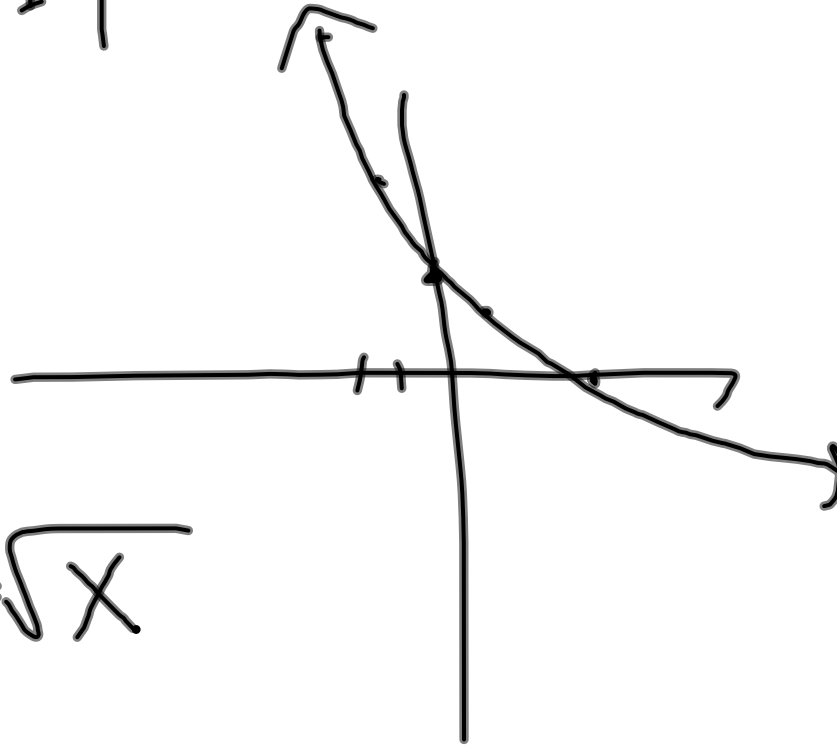
x	y
3	9
2	6
-1	3
-4	12



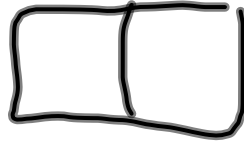
$$y = x^2 - 4x + 4$$

x	y
-2	16
-1	9
0	4
1	1
2	0

$$y = \sqrt{x}$$



S	P
1	4
2	6
3	8
4	10
5	12



$$2t + 2 = P(t)$$

Pg. 250, #28- 52